



Amphenol

FIBER OPTIC PRODUCTS

R2CT CONNECTOR

OUTDOOR HOUSING



Product Spotlight
October 16th, 2017





Amphenol

FIBER OPTIC PRODUCTS



R2CT Connector

Outdoor Housing

The R2CT Field Installable Weatherproof Cable Gland is designed as a cost effective means of providing a removable interface for outdoor harsh environments.

The R2CT allows for quick and easy installation onto either Optical LC or RJ45 style outdoor cable assemblies. The system can be field assembled over optical duplex LC or RJ45 Ethernet cable assemblies. Factory terminated cable assemblies are available for faster implementation.

The R2CT allows direct mating to edge mounted active devices or as a sealed feed-thru to adapters or internally mounted devices. The R2CT Gland is also suitable for use as a feed-through interface for other type power, signal and fiber applications.



Housing w/ Cap

Benefits

- Allows flexibility to use factory terminated assemblies or field installed assemblies
- Provides superior weather resistance for harsh outdoor applications
- Easily installs without special tooling
- Easy and secure bayonet style coupling
- Available in long and short body designs
- Corrosion resistant aluminum housing
- Plug dust cap with pulling eye protects connectors during installation

Features

- Factory or field terminated
- Pass-thru design suitable with LC or RJ45 connectors
- IP67 water and dust protection
- Bird proof and rodent resistant
- Operating temperature: -40° to 85°C
- Cable Diameter Range:** 4.8mm to 7mm
- 45 lb. axial cable retention (200N)
- Flexible cable exit boot
- Durability: >100 mating cycles

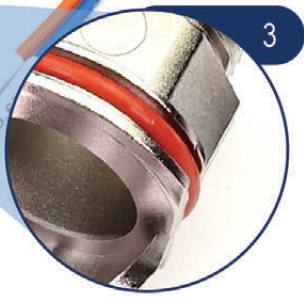




	Parameter	Specification
Mechanical	Mating Endurance	IEC 61300-2-2
	Vibration	IEC 61300-2-1
	Shocks	IEC 61300-2-9
Environmental	Salt Mist	IEC 61300-2-26
	Temperature	IEC 61300-2-22
	Ingress Protection	IEC 60529



1. Sliding diecast body
2. Bayonet-style mating
3. IP67 sealed connection
4. LC connector inside housing



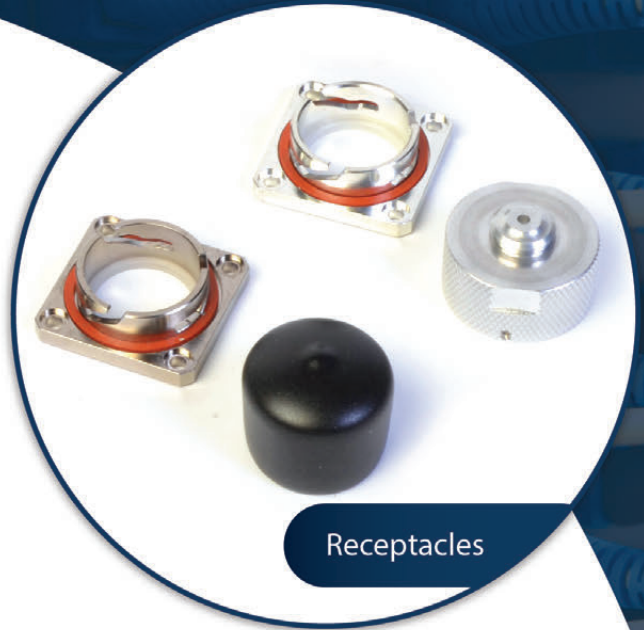
Quick and Secure Coupling



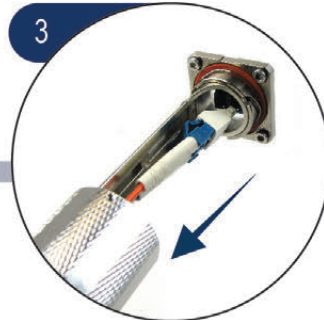
1 Align body and receptacle



2 Rotate and lock body in receptacle



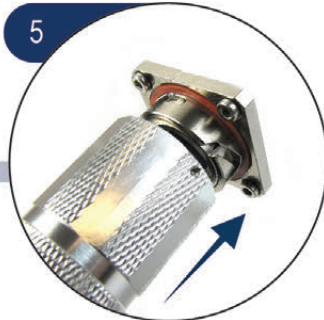
Receptacles



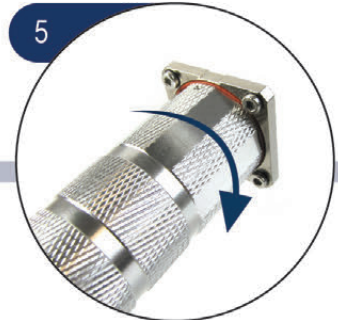
3 Slide back housing and LC remove dust caps



4 Mate LC connector to adapters



5 Slide forward housing



5 Rotate and lock housing in receptacle

Component Identification



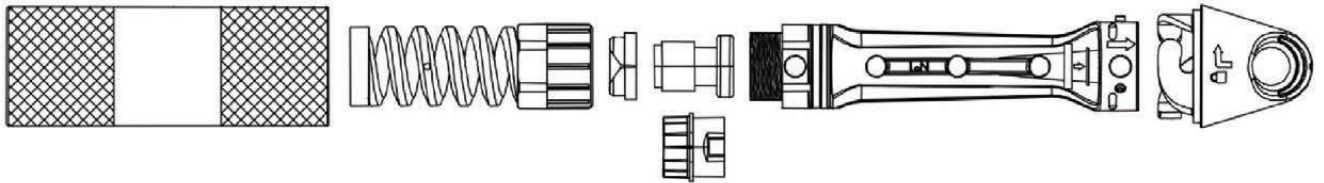
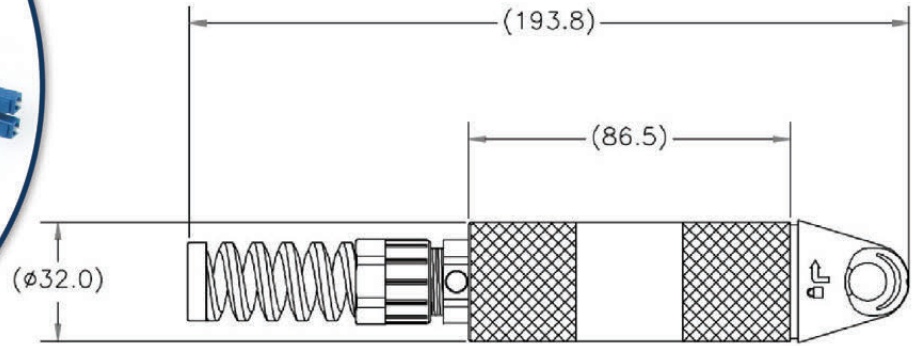
Applications

- FTTA
- Small Cells
- Outdoor Areas
- Wireless
- Harsh Environment

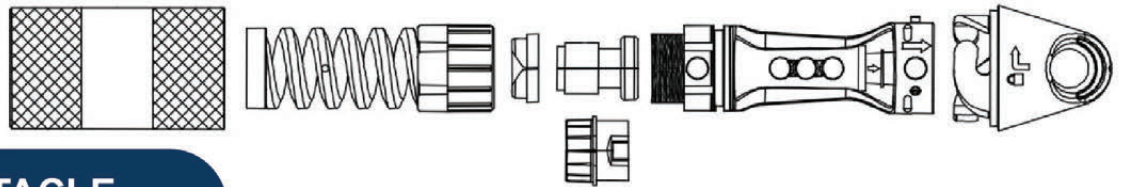
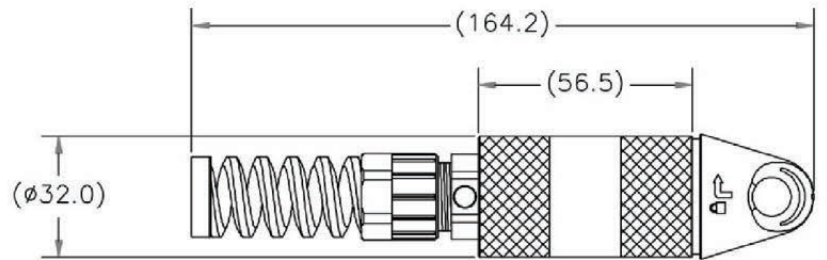
R2CT CONNECTOR
Long Body - 957-5001



LC and RJ45 Based



R2CT CONNECTOR
Short Body - 957-5002



Industry Compliance

Connectors are mechanically and optically intermateable with industry standard connectors and adapters and conform to TIA/EIA, IEC, and Telcordia specifications

RoHS compliant

R2CT RECEPTACLE

957-5010 (Disposable Cap) 957-5011 (Aluminum Cap)

