



Amphenol

FIBER OPTIC PRODUCTS

IP-FX SEALED OSP HOUSING



Product Spotlight
May 22nd, 2017



IP-FX Sealed OSP Housing

The Amphenol IP-FX is a compact, sealed, outdoor feedthru housing that is designed to provide dust and water protection for assemblies mating to outdoor enclosures and transmission equipment. The IP-FX is suitable to protect several connector types including LC Duplex, RJ45, USB, and others.

The unique design of the IP-FX housing allows it to be supplied on factory terminated (tested cables) or field installed over existing cables such as LC Duplex or RJ45, making it an ideal solution for conversion from legacy systems to newer transmission equipment. IP-FX housing mates to equipment or enclosures that are pre-fitted with the FullAXS-style receptacle, providing a water and dust sealed interface when mated. Applications include connection to Remote Radio Units (RRU/RRH), FTTA equipment and other outdoor systems.



Housing w/ Cap

Benefits

- Allows flexibility to use factory terminated assemblies, pre-terminated or field installed assemblies.
- Provides superior weather resistance for harsh outdoor applications
- Pass-thru design suitable with various industry standard connector and cable types
- Easily installs without special tooling
- Bayonet style coupling
- Provides bend protection for installation and long term use
- One handed mating-no torque requirements for proper sealing

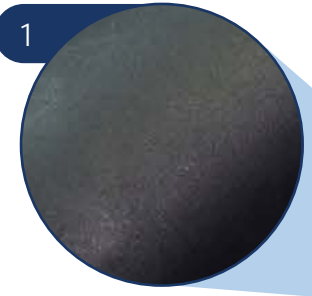
Features

- Two fiber, LC-based connector
- Bird proof and rodent resistant
- IP-67 water and dust protection
- Factory or field terminated
- 100 minimum mating cycles
- Operating temperature: -40° to 85°C
- Cable Diameter Range: 4.8mm to 7mm
- 33 lb. axial cable retention (150N)
- Flexible cable exit boot

1. PBT plastic with glass fibers for reinforcement
2. IP-67 sealed connection
3. Bayonet-style mating
4. LC connector inside housing
5. Bend protection



Rear Seal



1



5

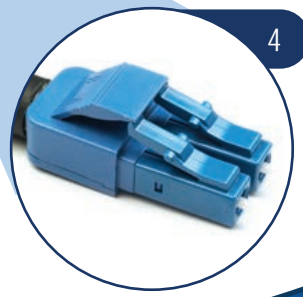
Pulling Eye



2



3



4

Commitment to Quality

Amphenol

Amphenol is the world's leading interconnectivity provider. Founded in 1932, Amphenol designs, manufactures, and markets fiber optic, electrical, and coaxial interconnect products. Amphenol products are engineered and manufactured in the Americas, Europe, Asia, and Africa and offered through a worldwide sales and marketing organization.

Experience

As a manufacturer with over 80 years of interconnect design and development, Amphenol leads innovation in connector technology. Utilizing this experience, Amphenol is able to develop a cost effective end-to-end solution to satisfy a customer's full connectivity and cabling needs.

Reliability

Amphenol has a long history of total quality performance. Our high quality products, helpful customer service, and dependable product support from design through production result in satisfied customers.



Housing

Parameter

Specification

Pull Force: 150N (33 Pounds)	IEC 61300-2-4
Vibration	IEC 61300-2-1
Salt Mist	IEC 61300-2-26
Impact	IEC 61300-2-12
Temperature	IEC 61300-2-22
Humidity	IEC 61300-2-22

Industry Compliance

Connectors are mechanically and optically intermateable with industry standard connectors and adapters and conform to TIA/EIA, IEC, and Telcordia specifications

RoHS compliant

Applications

FTTH/FTTA	Small Cells
Outdoor Areas	Wireless
Harsh Environment	

Ordering Information

Part Number	Item Description
958-5000-1	Kit, IP-FX Connector, Factory for 4.8-6.0mm Cable
958-5000-2	Kit, IP-FX Connector, Factory for 6.0-8.0mm Cable
958-5001-1	Kit, IP-FX Connector, Field for 4.8-6.0mm Cable
958-5001-2	Kit, IP-FX Connector, Field for 6.0-8.0mm Cable
942-98473-10006	Jumper, IP-FX To LC Duplex (Std with 250mm Break Out)

IP-FX Housing



Housing Options

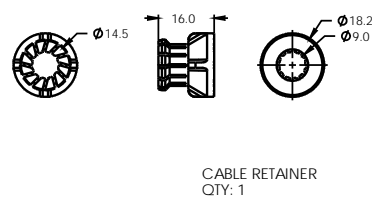
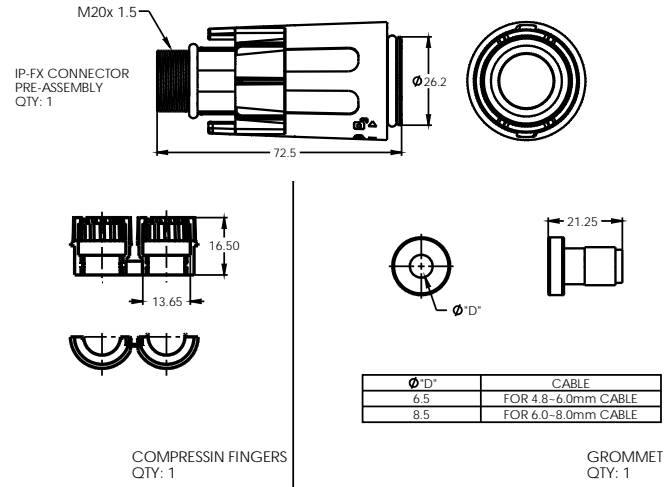
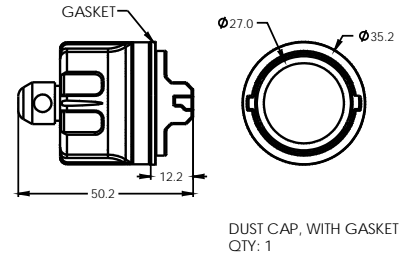
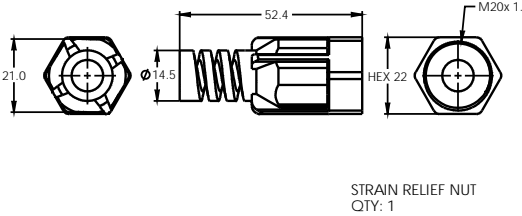


TABLE 1

PART NUMBER	GROMMET
958-5000-1	FOR 4.8-6.0mm CABLE
958-5000-2	FOR 6.0-8.0mm CABLE



- NOTES:
 1. DIMENSIONS ARE SHOWN IN MILLIMETERS.
 2. GROMMET TYPE DENOTED BY PART NUMBER, SEE TABLE 1 WHERE: X=1 IS FOR 4.5-6.0 CABLE X=2 IS FOR 6.0-8.0 CABLE
 3. PARTS MUST BE RoHS COMPLIANT AND CONFORM TO AMPHENOL REGULATED MATERIALS PROCEDURE 949-1604.
 4. A-P ON END OF PART NUMBER INDICATES PACKED.

IP-FX Cable Assembly w/ LC

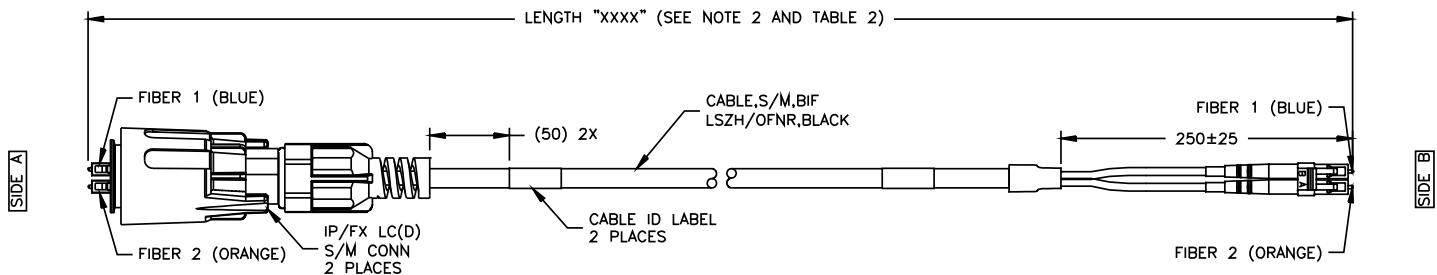


TABLE 1: WIRING TABLE

FIBER	SIDE A	SIDE B
1 (BLUE)	A	B
2 (ORANGE)	B	A

TABLE 2 LENGTH & TOLERANCE

LENGTH (m)	TOLERANCE (m)
≤1.00	+0.10/-0
>1.00 TO ≤12.50	+0.25/-0
>12.50	+2%/-0

